

What to know about Radiographic Bone Level (RBL):

Periodontology and Clinical AI

Identifying signs of periodontal disease is easier than ever with Videa Perio Assist from VideaHealth. Here's what you need to know.

What is RBL?

RBL is short for radiographic bone level, which refers to the measurement of the height of the alveolar bone surrounding the roots of teeth in an x-ray. Interproximal RBL is a valuable supplement in diagnosing periodontal disease alongside periodontal probing.

What is Videa Perio Assist?

Videa Perio Assist is an FDA-cleared AI-powered measurement tool in Videa Assist. It helps hygienists and dentists easily measure interproximal RBL, proactively identify early signs of periodontal disease for patients 12 and older, and educate patients during treatment planning.

What are the benefits of RBL measurement?



More proactive treatment

Helps identify earlier indications of periodontal disease, leading to more timely and more accurate treatment recommendations.



Monitor disease progression

X-rays record bone levels over time, which can be used to track RBL progression and evaluate the effectiveness of treatment.



Measurement consistency

With Videa Perio Assist, interproximal RBL measurement is quick, seamless and consistent.



Higher patient case acceptance

Visualizations are color-coded for easier patient education, leading to higher case acceptance.

What to know about Radiographic Bone Level (RBL):

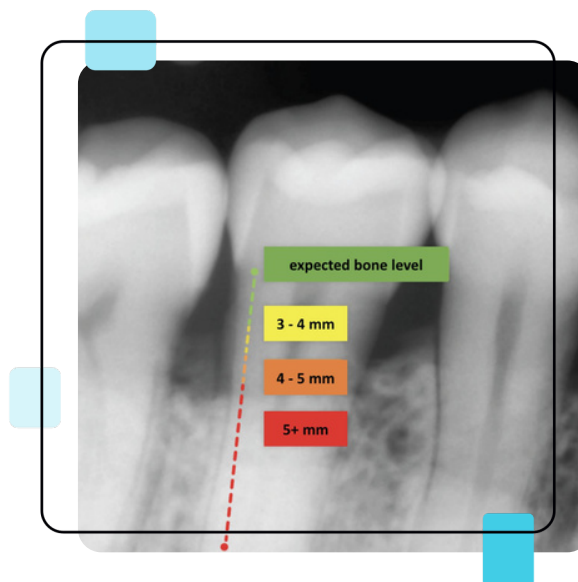
How do you read RBL annotations?

RBL annotations are color-coded to denote severity and bone level measurements (see table).

RBL annotations are shown as dots and connecting lines on the mesial and distal sides of every tooth.

- One CEJ (cementoenamel junction) point
- One ABL (alveolar bone level) point
- 1-2 root tip points in purple






RBL annotations are measured in millimeters on bitewings and %s (ratio relative to root length) on PAs.



Videa Perio Assist has been a game-changer for our hygienists and dentists. [It] not only empowers our team to make better treatment recommendations, but also its intuitive visualizations make it very easy for us to educate patients and explain our findings.



Marlene Kacy
Director of Hygiene
42 North Dental

	BW	PA	PERIO CLASS
Green	 <3mm	<15%	Stage 1
Yellow	 3mm-4mm	15-24%	Stage 1/2
Orange	 4mm-5mm	24-33%	Stage 2
Red	 >5mm	>33%	Stage 3/4
White	 No measurement is available. This is usually due to a lack of root tip detected in a PA.		

Have questions or want to learn more?

Contact us at:

support@videa.ai